

Specialist Support Services

Pre-Terminated Copper and Fibre Assemblies, Pre-Configured Racks and Cabinets, On-Site Cabinet Assembly and Laser Engraved Labelling

Excel is a world-class premium performing end-to-end infrastructure solution - designed, manufactured, supported and delivered - without compromise.

www.excel-networking.com

excel
without compromise.

Why Choose our Specialist Support Services?

At Excel Networking Solutions, we provide customers with high quality end-to-end infrastructure solutions. Designed with installers in mind, we offer a range of Specialist Support Services, which are ideal for projects with limited time available on-site for installation or for rapid deployment projects. Having a trusted partner that can deliver expertly inspected, fully traceable and 100% tested systems helps alleviate pressure. Our range of Specialist Support Services are carried out by our team of trained experts at our Birmingham HQ.

By providing installers with pre-tested, pre-qualified products, we are helping them to deploy products faster and to reduce their costs by removing the need to invest in specialist equipment, labour and management costs. The risk of any issues arising can be significantly reduced or even removed by utilising the range of support services available from Excel Networking Solutions.



Reduce Cost



Save Time



Minimise Waste



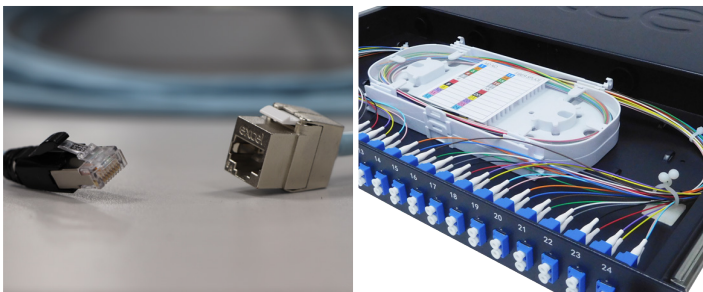
Optimise Flexibility



Enhance Reliability



Fast Turnaround



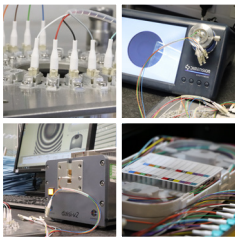
What services do we offer?



Pre-Terminated Copper Assemblies

More information on page 6

Arrange for your copper system to be delivered to site ready to simply be installed, saving you time and money on your project overall. Whether you are looking for your keystone jacks to be terminated to the cable or you are interested in having the complete solution pre-terminated, our team of specialists have got you covered.



Pre-Terminated Fibre Assemblies

More information on page 8

If you don't have easy access to polishing machines or ferrule geometry interferometer machinery on-site, we can deliver a pre-terminated fibre solution that has undergone all the necessary procedures so that it is ready to be installed as soon as it reaches your site.



Bespoke Laser Engraved Labelling

More information on page 9

Ensure that every one of your applications is professionally labelled and easy for the end user to manage as soon as it is installed with our fade-proof acrylic adhesive material, cut and printed to bespoke sizes to suit any requirement.



Pre-Configured Rack Solutions

More information on page 10

We have a dedicated Assembly Team in Birmingham where our team of specialists build Environ racks and install a variety of accessories, delivering it to your site already configured, considerably reducing your on-site installation time.



On-Site Cabinet Assembly

More information on page 11

The majority of our Environ racks are also available in flat packs, so where there is restricted access to a site or a limited installation time window, the racks can be delivered to site as a flat-packed solution, and our experienced team of cabinet builders will visit the location, position the racks and build them to the agreed specification.

At Excel, we #SayNoToSingleUsePlastic

We are removing all the single-use plastic from the majority of the Excel product packaging. By switching to “natural” brown packaging options, we will be reducing our annual single-use plastic bag usage by more than 16 million bags*. This is the equivalent of over 40 tonnes of single-use plastic being removed from the supply chain each year and replaced with 100% recyclable packaging.

Each of our Specialist Support Services are supplied without any plastic packaging. Our drive to remove single-use plastic packaging is the latest example of our efforts to improve our sustainability – but it is by no means the end of the road.



THE PROBLEM



It takes up to 1,000 years for plastic to degrade.



More than 8 million tonnes of plastic is dumped into the oceans every year.



Half of all plastics ever manufactured have been made in the last 15 years

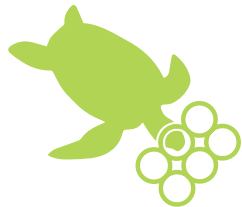
THE IMPACT



If nothing is done by 2050, pieces of plastic in the ocean will outweigh the number of fish.



More than 32% of global plastic waste ends up in the ocean.



Over 500 species of marine animals have either eaten or been entangled in plastic.

THE SOLUTION

At Excel, we are acutely aware of the damage that plastic has on the environment and we are determined to lead the way in our industry to remove as much "single use plastic" from the supply chain as possible each year.



THE BENEFITS



Reduced waste volume



100% Recyclable Waste



Quicker to Install



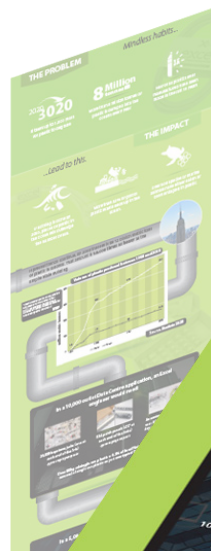
Easier for engineer on-site



Lower Installation Costs

Read more information online in our infographic

www.excel-networking.com/plastic-free



Pre-Terminated Copper Assemblies

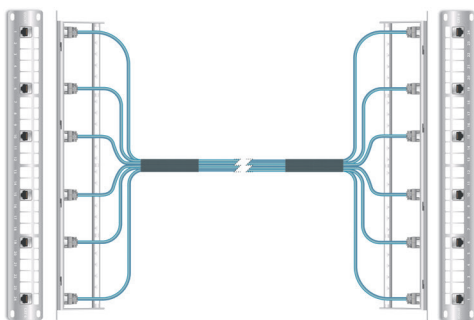
Our pre-terminated copper solutions offer the installer and end user flexibility and the highest levels of performance for any network cabling infrastructure project. Our team operate with a fast turnaround - typically 3 days - with all products 100% inspected, fully tested and traceable. Our pre-terminated copper products are also covered by the comprehensive 25-year Excel system warranty when installed by an accredited partner.

Features

- Available in Category 5e, Category 6, Category 6A, Category 7A – Screened (U/FTP, F/FTP and S/FTP) or Unscreened (U/UTP)
- Pre-labelled
- Single assemblies or loomed
- Looming Options: loose looms, Hook 'n' Loop ties or braided cable socking
- Can be fitted with Keystone Jacks, Modules, Plugs or Panels on either or both ends
- GOP assemblies - 1 to 12-way
- GOPs fitted with flexible conduit or glands
- 6-port module assemblies for the Excel mixed-use panel (screened or unscreened)
- PCB panels
- Keystone jack panels
- Labelled panels

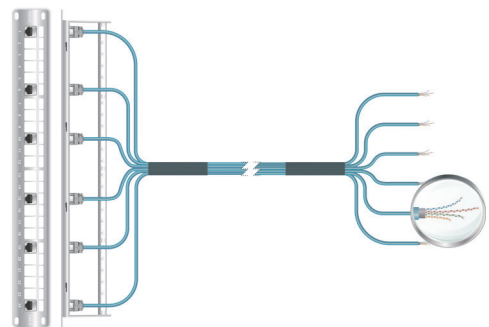
Panel to Panel

Where accurate lengths are available, a panel to panel style is the optimum solution, allowing for installation to take place quickly and easily.



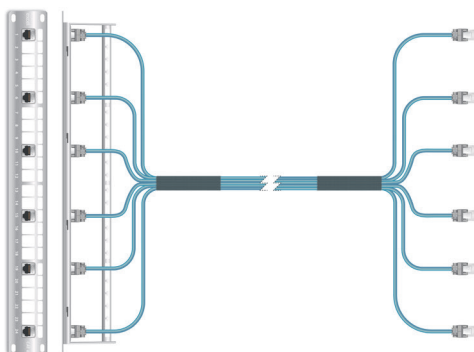
Panel to Open

Where accurate lengths are not available, a panel to open style allows for the remote connector or panel to be terminated in the field.



Panel to Jack

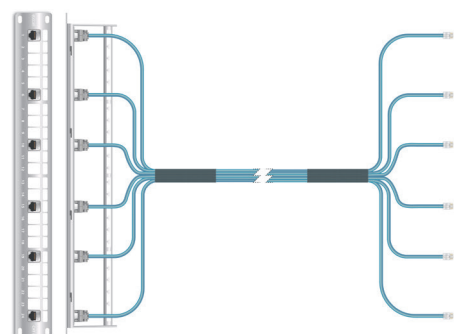
This style is ideal when deploying data outlets from a patching field via horizontal distribution out to the work area in an inter-connect configuration.



Switch/Harness Links

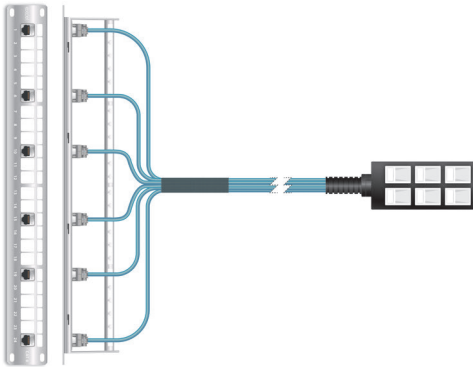
Mainly deployed in MERs, this style is made up of a panel-to-plug link, which are then dressed together to create a loom, allowing for a cross-connect deployment.

Solid core RJ45 to RJ45 leads can be supplied when there is the need to create switch harness links on site.



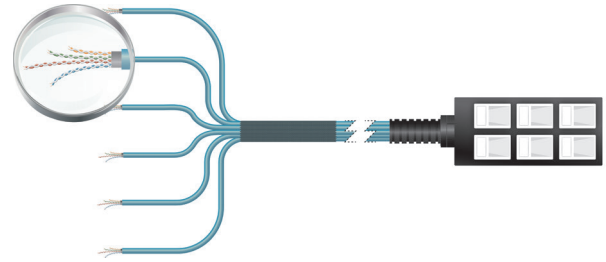
Panel to GOP Box

The assembly is supplied with the outlet jacks terminated onto the cable and fitted within the GOP box, with the flexible conduit also in place. The patch panel jacks are installed ready to be inserted into the panels.



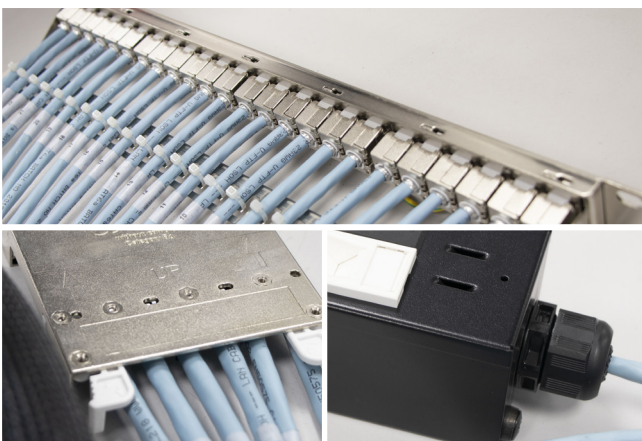
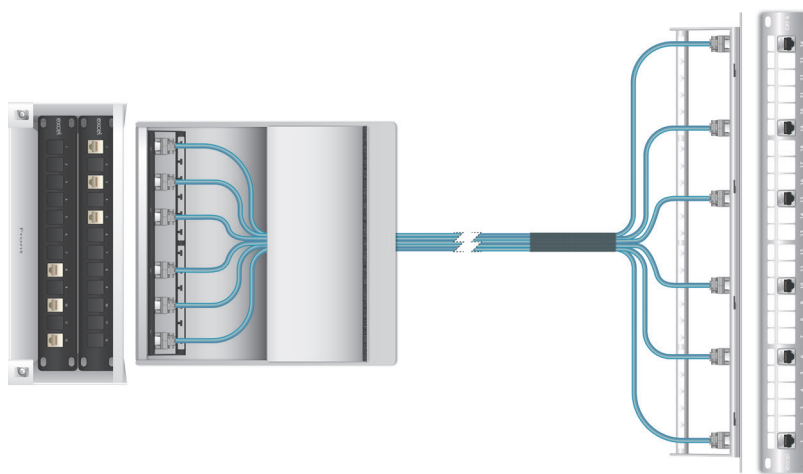
GOP Box to Open

This style is ideal for 'flood' wiring a complete floor on a grid basis allowing total flexibility for multiple re-configurations of the furniture layout.



Consolidation Point

This solution allows for changes to happen locally to the work area without the need to access the remote data centre. The consolidation unit can also be used for staged developments within new pre-fabricated buildings. The cables can be deployed within the structure and patched together once the building is in situ.



Watch the video
on youtube

www.youtube.com/ExcelNetworking



More details online
or in our brochure

www.excel-networking.com/pre-terminated-copper-assemblies

Pre-Terminated Fibre Assemblies

Our extensive options for pre-terminated fibre assemblies has evolved with the increasing demands for high performance, high speed networks and data centres. Our Enbeam fibre solutions provide a number of connectivity options to suit any application, including MTP, LC and SC cassettes. Our pre-terminated fibre products are also covered by the comprehensive 25-year Excel system warranty when installed by an accredited partner.

Features

- Available in OM1, OM2, OM3, OM4, OM5 and OS2
- Available in all core counts from 1 to 24
- Bespoke breakout lengths to suit application
- Machine polished
- Pre-labelled
- Ferrule geometry checked on interferometer to ensure best performance in all conditions
- Fitted with protection both ends
- One end fitted with a pulling eye
- Glands pre-fitted both ends
- Available on a drum or coiled in a bag
- Plug and Play

Excel SWA Cables

Steel Wire Armoured construction - similar to Loose Tube construction, internal/external grade, CPR compliant, duct grade, rodent resistant, suitable for direct burial, available in all fibre types.

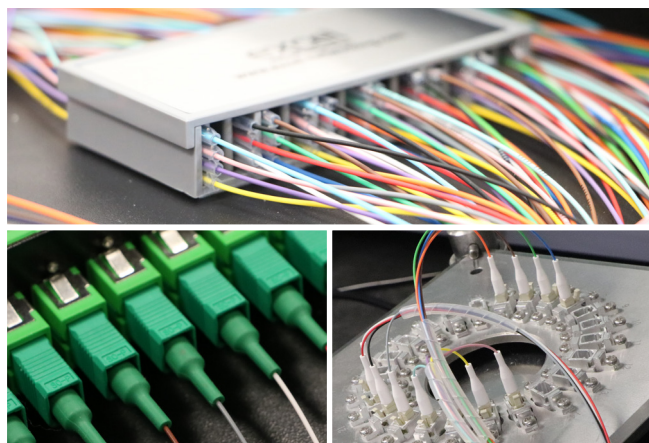
Excel Fibre Panels

Preloaded adaptors, cassettes, pigtails as required, any quantity of adaptors, pigtails, splice cassettes and splice holders, labelling and hybrid types.

Excel Loose Tube Cables

Similar to distribution cables but using loose tube construction, internal/external, silica gel or dry tubes, CPR compliant small diameter.

View and configure bespoke fibre optic cables on www.excel-networking.com/configurators



ENBEAM

Excel Fibre Cassettes

Pre-loaded with pigtails and adaptors, MTP cassettes - any configuration (standard, MOD1, MOD2).

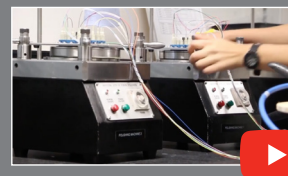
Excelerator Distribution Cables

Ideal for panel to panel links, internal/external tight buffered cable, CPR compliant, 900-micron tails, all tails colour coded, available with cassettes pre-fitted for the Excel mixed-use panel, cable colour – black and HD panels.

Excel CST Cables

Similar to Loose Tube construction - same internal construction, corrugated steel tape armoured, internal/external grade, CPR compliant, duct grade, rodent resistant.

EXCELERATOR



Watch the video on Youtube

www.youtube.com/ExcelNetworking



More details online or in our brochure

www.excel-networking.com/pre-terminated-fibre-assemblies



Bespoke Laser Engraved Labelling

We can provide the highest quality laminated, laser-engraved labels printed to your specific requirements and shipped the same day, or we can provide the labels pre-printed and installed onto products.

Products Include:

- Cabinets, patch panels, GOP boxes, outlet modules, cable looms and other pre-terminated solutions

What are the benefits of Laser Engraved Labels?

- Ensure that every application is professionally labelled from the moment it is installed
- Save valuable time on-site
- Engraving labels onto fade proof acrylic leads to long term quality and reliability
- Bespoke, made to measure for individual project requirements

Features:

- 2-colour laminate sheets
- Acrylic composition
- Strong adhesive backing
- Range of colours, shapes & sizes
- UV resistant
- Laser engraved
- High quality
- Same day despatch

*if ordered before 4pm, Monday to Friday



Watch the video
on youtube

www.youtube.com/ExcelNetworking



More details online
or in our brochure

www.excel-networking.com/bespoke-laser-engraved-labelling

Pre-Configured Racks

Racks included are Environ floor and wall racks. We can install the majority of kit that you need and deliver it ready configured to site. This service helps you to reduce installation costs and times, equipment, packaging and specialist labour costs and is covered by the 25-year Excel system warranty when installed by an accredited partner. Our team operate with a fast turnaround, typically 2 days.

We pre-install items exactly where required including:

- PDUs - horizontal & vertical
- Fan trays
- Patch cord/cable management
- Shelves - all types
- Cable tray/basket
- Pre-loomed cabling – patch cords, power etc.
- Environ Electronic Lock Solutions
- Special locks - unique keys, combination locks, RFID locks
- Pre-approved layout drawing/specification
- Pre-labelled

ENVIRON



Watch the video
on youtube

www.youtube.com/ExcelNetworking



More details online
or in our brochure
www.excel-networking.com/configured-racks

On-Site Cabinet Assembly

This service is ideal where access to the installation site is restricted or you have limited time on site.

How it Works

The Environ racks (flat packed), together with any additional accessories that you've ordered, including shelves, cable management, PDUs etc would be delivered to site by our normal delivery service the day before the planned installation.

Our experienced team of cabinet builders will visit the location and will position the rack(s) and build them to the agreed specification.

Features:

- We will fit shelves, cable management and PDUs if required
- We will provide a full Q.C. inspection of the built rack(s) and provide a handover to the customer
- We can provide method statements and risk assessments, including an advance assessment provision, should they be required
- Our team will include a first aider and CSCS certification if required

Information Required:

- How many cabinets are required to be assembled?
- Site address including post code
- What time would we be required on site?
- Is a site induction required prior to commencement of works?
- Required dates for site attendance
- Are there site access restrictions?
- Are there access restrictions within the building?
- Is parking available on-site?
- What floor/level is the site on?
- Is there a goods lift availability?
- What are the site working/opening times?

ENVIRON



Watch the video
on youtube

www.youtube.com/ExcelNetworking



More details online
or in our brochure
www.excel-networking.com/site-cabinet-assembly



European Headquarters

Excel House
Junction Six Industrial Park
Electric Avenue
Birmingham B6 7JJ
England

T: +44 (0)121 326 7557

E: sales@excel-networking.com



Certificate No. FS 547274



Certificate No. EMS 542863



www.excel-networking.com